

YOUR SOLUTION FOR QUICK, EASY INTERMITTENT CATHETERIZATION

Teleflex, through its RüsCH® Products, is a proud pioneer in urology. Through our global operations, we are one of the world's largest producers of urology catheters. Our comprehensive line of urological innovations provides a variety of solutions for bladder management.

RÜSCH® FLOCATH QUICK™ HYDROPHILIC INTERMITTENT CATHETER

RÜSCH® FLOCATH QUICK™ STANDARD 16" 30/BOX		RÜSCH® FLOCATH QUICK™ FEMALE 7" 30/BOX		RÜSCH® FLOCATH QUICK™ COUDÉ 16" 30/BOX	
PRODUCT #	SIZE	PRODUCT #	SIZE	PRODUCT #	SIZE
220400060	6 Fr	220500060	6 Fr	220600100	10 Fr
220400080	8 Fr	220500080	8 Fr	220600120	12Fr
220400100	10 Fr	220500100	10 Fr	220600140	14 Fr
220400120	12 Fr	220500120	12 Fr	220600160	16 Fr
220400140	14 Fr	220500140	14 Fr	220600180	18 Fr
220400160	16 Fr	220500160	16 Fr		

RÜSCH® FLOCATH QUICK™ KIT

RÜSCH® FLOCATH QUICK™ STANDARD 16" 50/BOX		RÜSCH® FLOCATH QUICK™ FEMALE 7" 50/BOX	
PRODUCT #	SIZE	PRODUCT #	SIZE
221400060	6 Fr	221500060	6 Fr
221400080	8 Fr	221500080	8 Fr
221400100	10 Fr	221500100	10 Fr
221400120	12 Fr	221500120	12 Fr
221400140	14 Fr	221500140	14 Fr
221400160	16 Fr	221500160	16 Fr

FOR MORE INFORMATION, CONTACT CUSTOMER SERVICE AT 1.800.334.4475 OR 1.866.246.6990 OR VISIT OUR WEBSITE AT TELEFLEX.COM.



RÜSCH®

Care at home

RÜSCH® FLOCATH QUICK™ USER GUIDE

Hydrophilic Intermittent Catheter

CAUTION: Federal (USA) law restricts this device to sale by or on the order of a physician.

Teleflex is a global provider of medical technologies designed to improve the health and quality of people's lives. We apply purpose driven innovation – a relentless pursuit of identifying unmet clinical needs – to benefit patients and healthcare providers. Our portfolio is diverse, with solutions in the fields of vascular and interventional access, surgical, anesthesia, cardiac care, urology, emergency medicine and respiratory care. Teleflex employees worldwide are united in the understanding that what we do every day makes a difference. For more information, please visit teleflex.com.

Teleflex is the home of Arrow®, Deknatel®, Hudson RCI®, LMA®, Pilling®, RüsCH®, and Weck® – trusted brands united by a common sense of purpose.

Corporate Office

Phone +1 610 225 6800, 550 E. Swedesford Road, Suite 400, Wayne, PA 19087, USA

Regional Offices

United States: Phone +1 919 544 8000, Toll Free 866 246 6990, cs@teleflex.com, 3015 Carrington Mill Boulevard, Morrisville, NC 27560, USA

Latin America: Phone +1 919 433 4999, la.cs@teleflex.com, 3015 Carrington Mill Boulevard, Morrisville, NC 27560, USA

International: Phone +353 (0)9 06 46 08 00, orders.intl@teleflex.com, Teleflex Medical Europe Ltd., IDA Business and Technology Park, Dublin Road, Athlone, Co Westmeath, Ireland

Australia 1300 360 226

Austria +43 (0)1 402 47 72

Belgium +32 (0)2 333 24 60

Canada +1 (0)800 387 9699

China (Shanghai) +86 (0)21 6163 0965

China (Beijing) +86 (0)10 6418 5699

Czech Republic +420 (0)495 759 111

France +33 (0)5 62 18 79 40

Germany +49 (0)7151 406 0

Greece +30 210 67 77 717

India +91 (0)44 2836 5040

Italy +39 0362 58 911

Japan +81 (0)3 6632 3600

Korea +82 2 536 7550

Mexico +52 55 5002 3500

Netherlands +31 (0)88 00 215 00

New Zealand 0800 601 100

Portugal +351 22 541 90 85

Singapore (SEA non-direct sales countries)

+65 6439 3000

Slovak Republic +421 (0)3377 254 28

South Africa +27 (0)11 807 4887

Spain +34 918 300 451

Switzerland +41 (0)31 818 40 90

United Kingdom +44 (0)1494 53 27 61

For more information, please visit teleflex.com.

Teleflex, the Teleflex logo, Arrow, Deknatel, FloCath Quick, Hudson RCI, LMA, Pilling, RüsCH, and Weck are trademarks or registered trademarks of Teleflex Incorporated or its affiliates, in the U.S. and/or other countries.

Information in this document is not a substitute for the product Instructions for Use. The products in this document may not be available in all countries. Please contact your local representative. All data current at time of printing (05/2017). Subject to technical changes without further notice.

© 2017 Teleflex Incorporated. All rights reserved. MC-003015



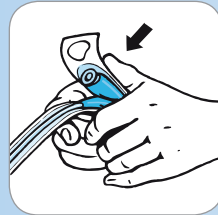
Teleflex®

Teleflex®

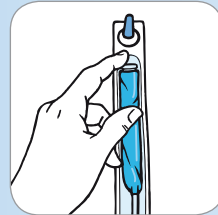
RÜSCH® FLOCATH QUICK™

HYDROPHILIC INTERMITTENT CATHETER

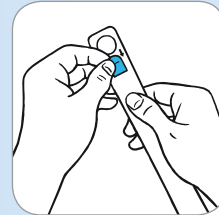
APPLICATION INFORMATION



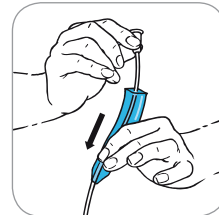
1 Before opening the peel-back pouch, fold and squeeze the pouch containing the sterile saline solution. The liquid is released into the packaging.



2 Hang the package by its thumb grip or fix it to a suitable surface using the self-adhesive patch.



4 Tear the packaging open by the thumb grips and remove the catheter using the protective sleeve.



5 Holding the funnel, slide the protective sleeve along the catheter towards the tip. The sleeve will glide easily over the catheter.



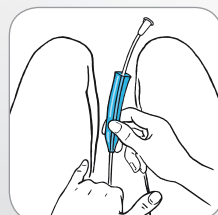
3 Allow 30 seconds for the coating to become activated.



7 The protective catheter sleeve can now be slid back over the funnel and used as an extension while emptying the bladder.



8 Remember to wash or disinfect your hands before and after catheterization.



6 Holding the protective catheter sleeve, insert the catheter into the urethra.

Your solution for quick, easy intermittent catheterization. Features an integrated sterile 0.9% saline pouch and easy grip sleeve.



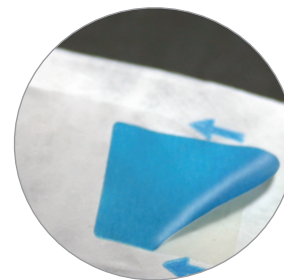
INTEGRATED STERILE SALINE SOLUTION POUCH
No need to search for water source to activate the hydrophilic catheter coating.

HYDROPHILIC COATING
The hydrophilic coating is designed to help reduce friction and tissue irritation that can occur with the use of uncoated catheters.

HYGIENIC PROTECTIVE CATHETER SLEEVE
The protective sleeve provides an easy grip, allowing for touchless insertion. The sleeve can also be pushed back and used as an extension to the catheter.

THUMB GRIP
Designed to allow the package to be easily opened even if manual dexterity is limited. It can also be used to hang the catheter package.

SELF-ADHESIVE PATCH
Easy to peel off self-adhesive patch enables the catheter package to adhere to a suitable surface, allowing both hands to remain free.



CAUTION

Prior to use, read all instructions that accompany your product for the current warnings, precautions, contraindications, and instructional information applicable to the device. This guide is not a replacement or substitute for the product instructions for use.