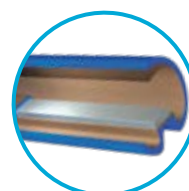
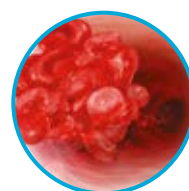


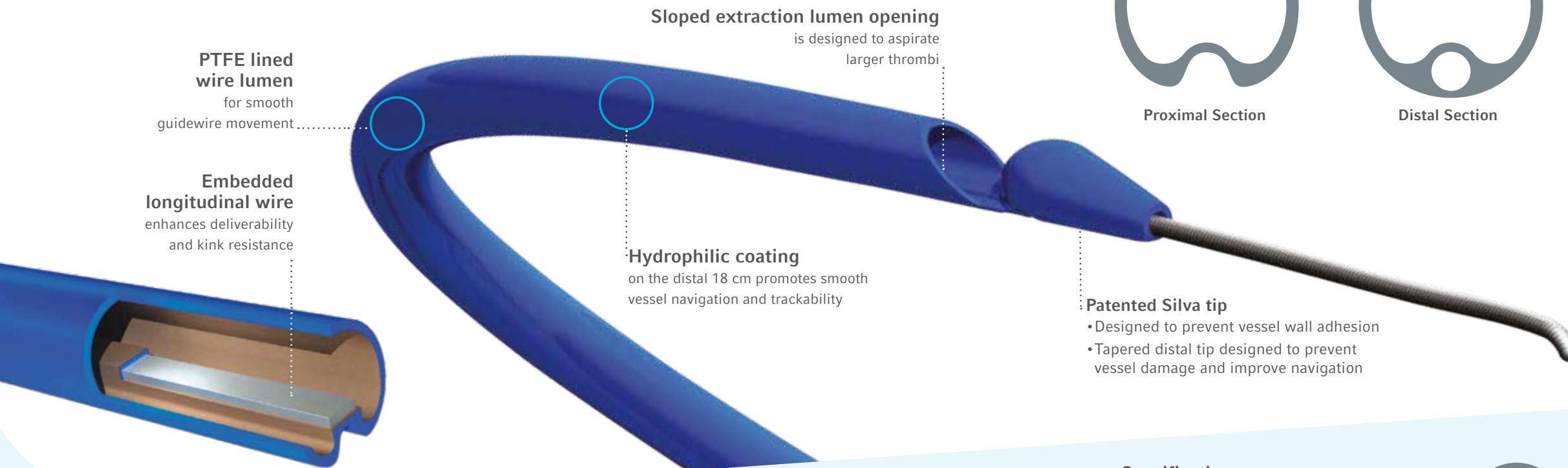
Pronto® V4 Extraction Catheter

Powerful Aspiration and Exceptional Kink Resistance

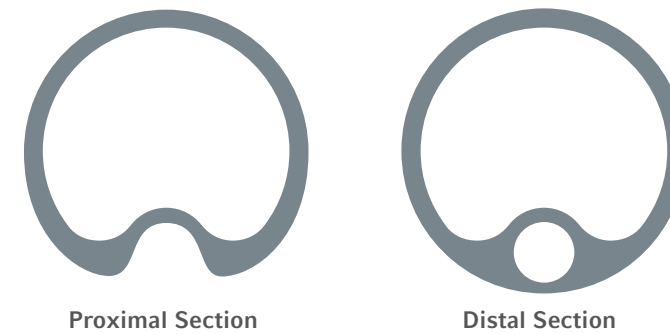


Simple and Rapid Thrombus Removal

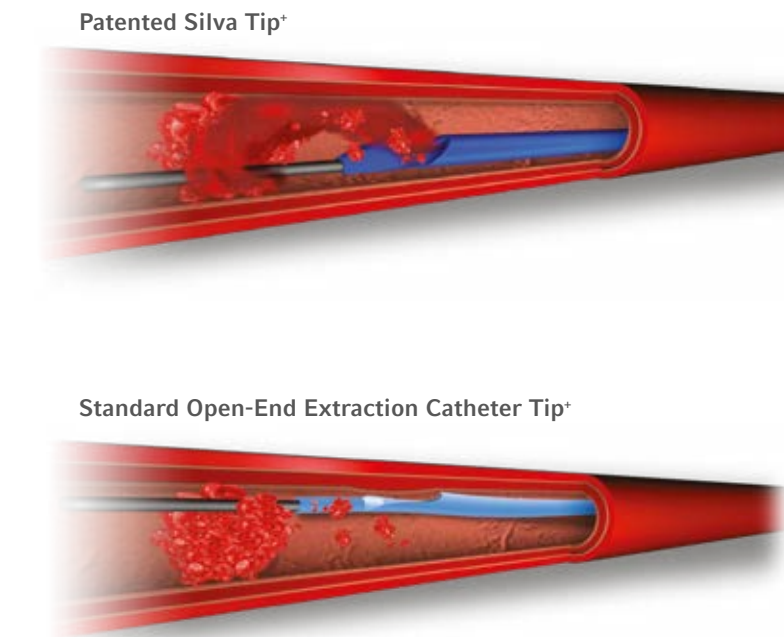
The Pronto® V4 Catheter's uniformly large extraction lumen is engineered to provide unmatched aspiration performance.* The patented Silva tip is designed to prevent vessel damage and enhance deliverability. The Pronto® V4 Catheter is available in 5.5 Fr., 6 Fr., 7 Fr. and 8 Fr. sizes, each featuring an embedded longitudinal wire for kink resistance and enhanced pushability.



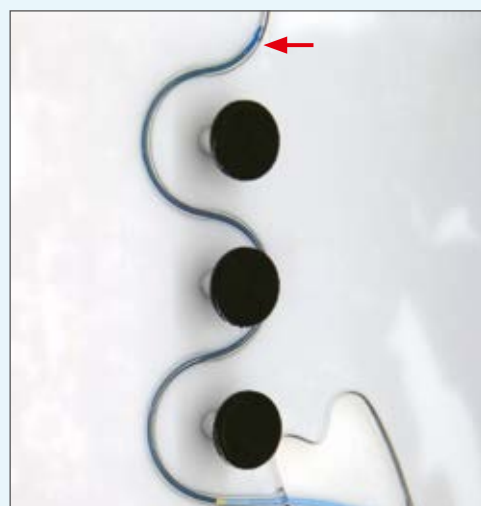
Uniformly large extraction lumen
Designed to maximize thrombus extraction force



Patented, tapered Silva tip
Designed to improve navigation and prevent vessel wall adhesion



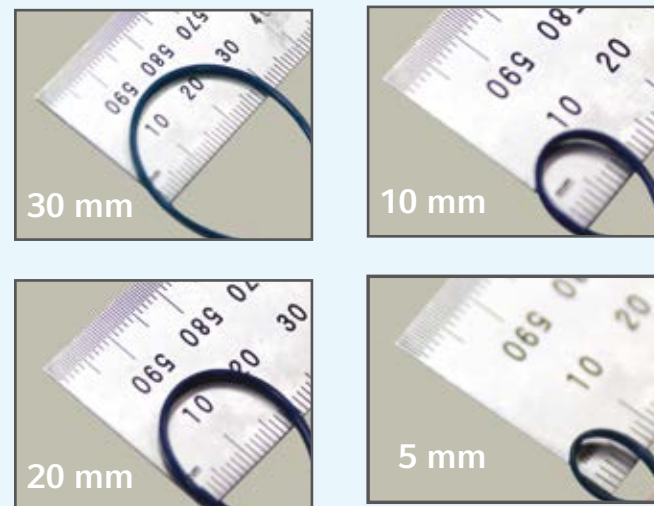
Designed for Superb Deliverability



Pronto® V4 Catheter

Images are a bench top demonstration for illustrative purposes only, and are not necessarily indicative of clinical performance.

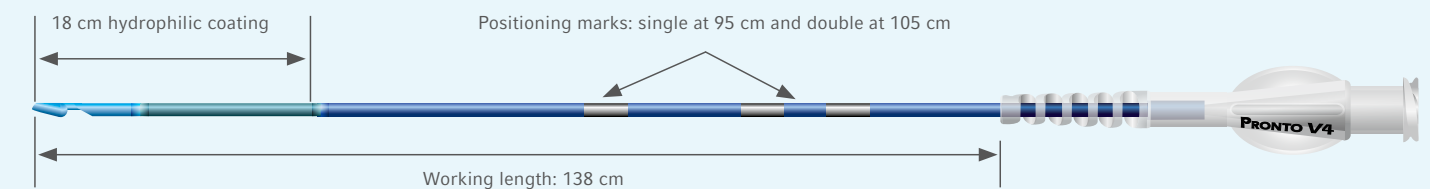
Kink Resistant Design to Enhance Performance



Pronto® V4 Catheter

Specifications

Extraction Lumen Size
Extraction Rate*



Specifications and Ordering Information

VERSION	MODEL	GUIDE CATHETER COMPATIBILITY	SHEATH COMPATIBILITY	GUIDEWIRE COMPATIBILITY	MINIMUM VESSEL SIZE	WORKING LENGTH	UNITS/BOX
5.5 Fr.	4005	6 Fr. (≥0.066")	5 Fr.	0.014" (0.36 mm)	1.75 mm (0.068")	138 cm	1
6 Fr.	4006	6 Fr. (≥0.070")	5 Fr.	0.014" (0.36 mm)	2.00 mm (0.078")	138 cm	1
7 Fr.	4007	7 Fr. (≥0.078")	6 Fr.	0.014" (0.36 mm)	2.25 mm (0.088")	138 cm	1
8 Fr.	4008	8 Fr. (≥0.088")	7 Fr.	0.014" (0.36 mm)	2.50 mm (0.098")	138 cm	1

Packaged in quantities of 1 unit per box.

The Pronto® V4 extraction catheter is indicated for the removal of fresh, soft emboli and thrombi from vessels in the coronary and peripheral vasculature.

*Testing completed by Teleflex. Data on file. Bench test results are not necessarily indicative of clinical performance.

*For illustrative purposes only; based on bench testing. Data on file. Bench test results are not necessarily indicative of clinical performance.

Teleflex is a global provider of medical technologies designed to improve the health and quality of people's lives. We apply purpose-driven innovation – a relentless pursuit of identifying unmet clinical needs – to benefit patients and healthcare providers. Our portfolio is diverse, with solutions in the fields of vascular and interventional access, surgical, anesthesia, cardiac care, urology, emergency medicine and respiratory care. Teleflex employees worldwide are united in the understanding that what we do every day makes a difference. For more information, please visit teleflex.com.

Teleflex is the home of Arrow®, Deknatel®, Hudson RCI®, LMA®, Pilling®, Rüschi®, UroLift®, and Weck® – trusted brands united by a common sense of purpose.

Corporate Office

Phone +1 610 225 6800, 550 E. Swedesford Road, Suite 400, Wayne, PA 19087, USA

Regional Offices

United States: Phone +1 919 544 8000, Toll Free 866 246 6990, cs@teleflex.com, 3015 Carrington Mill Boulevard, Morrisville, NC 27560, USA

Latin America: Phone +1 919 433 4999, la.cs@teleflex.com, 3015 Carrington Mill Boulevard, Morrisville, NC 27560, USA

International: Phone +353 (0)9 06 46 08 00, orders.intl@teleflex.com, Teleflex Medical Europe Ltd., IDA Business and Technology Park, Dublin Road, Athlone, Co Westmeath, Ireland

Australia 1300 360 226

Austria +43 (0)1 402 47 72

Belgium +32 (0)2 333 24 60

Canada +1 (0)800 387 9699

China (Shanghai) +86 (0)21 6163 0965

China (Beijing) +86 (0)10 6418 5699

Czech Republic +420 (0)495 759 111

France +33 (0)5 62 18 79 40

Germany +49 (0)711 2090 8000

Greece +30 210 67 77 717

India +91 (0)44 2836 5040

Italy +39 0362 58911

Japan +81 (0)3 6632 3600

Korea +82 2 536 7550

Mexico +52 55 5002 3500

Netherlands +31 (0)88 00 215 00

New Zealand 0800 601 100

Poland +48 22 4624032

Portugal +351 22 541 90 85

Singapore (SEA non-direct sales countries) +65 6439 3000

Slovak Republic +421 (0)3377 254 28

South Africa +27 (0)11 807 4887

Spain +34 918 300 451

Switzerland +41 (0)31 818 40 90

United Kingdom +44 (0)1494 53 27 61

For more information, please visit teleflex.com.

Please see the Instructions for Use for a complete listing of the indications, contraindications, warnings and precautions.

CAUTION: Federal (USA) law restricts this device to sale by or on the order of a physician.

Teleflex, the Teleflex logo, and Pronto are trademarks or registered trademarks of Teleflex Incorporated or its affiliates, in the U.S. and/or other countries. Information in this material is not a substitute for the product Instructions for Use. Not all products may be available in all countries. Please contact your local representative. Revised: 08/2019

© 2019 Teleflex Incorporated. All rights reserved. MC-005602 Rev. 0