

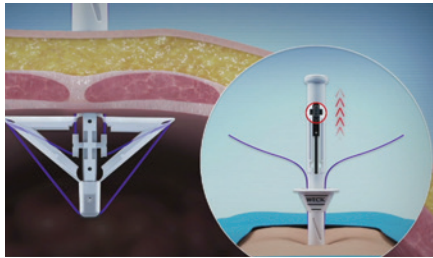


Weck® EFX® Fascial Closure Solutions

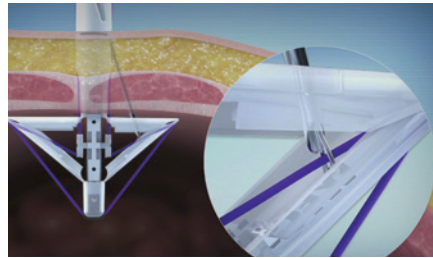
The industry's first shielded fascial closure device – now accompanied by a portfolio of closure options to **standardize your clinical and supply chain needs.**

Three steps for consistent fascial closure

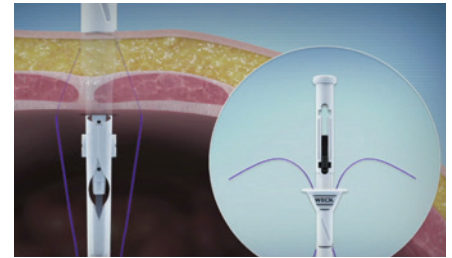
To prepare the system, remove both components from the packaging and load the EFx Shield device with a size 0, 18 in. absorbable suture.



Step 1 – Deploy the device



Step 2 – Retrieve the suture



Step 3 – Collapse and close

For a more detailed look...

Visit teleflex.link/EFxShield to see and learn more.

Fast closure and consistent suture placement with a powerful device

Consistent suture placement

Data shows more consistent suture placement when closing defects using the Weck EFx Shield System versus the CooperSurgical® Carter-Thomason CloseSure System^{o1}

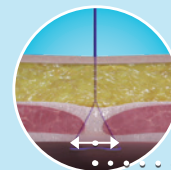
Fast defect closure

Data shows faster defect closure when using the Weck EFx Shield System versus CooperSurgical's Carter-Thomason CloseSure System.¹

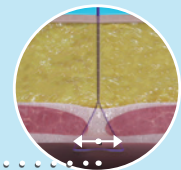
Powerful retention

The average retraction force of the Weck EFx Shield System is at least 90 lbs.²

The design of the EFx Shield System ensures consistent fascia purchase, even in varying abdominal wall thicknesses



Small Patient, with a thin abdominal wall.



Large Patient, with a thick abdominal wall.

Same fascia purchase

1. Data on file. Teleflex Incorporated 2016
2. Data on file. Teleflex Incorporated 2016

Weck® EFx Shield® Fascial Closure System

The Weck EFx Shield Fascial Closure System from Teleflex is a shielded port closure device that provides enhanced sharps protection and uniform suture placement for consistent fascial closure.

The EFx Shield System is designed to offer speed and safety with an array of enhanced features, including:

- Unique shielded wing design for enhanced sharps protection
- Intuitive wing deployment
- Innovative suture retrieval system for unassisted suture capture

Suture retriever button
designed to make capture and retrieval of suture strands fast and secure

Reset button

Slide lock
makes wing deployment and approximation easy

Retraction wings
for greater abdominal wall retraction and improved stability

Suture retrieval wing shields
provide enhanced sharps protection, safe suture retrieval, and accurate suture placement



Industry Awards:



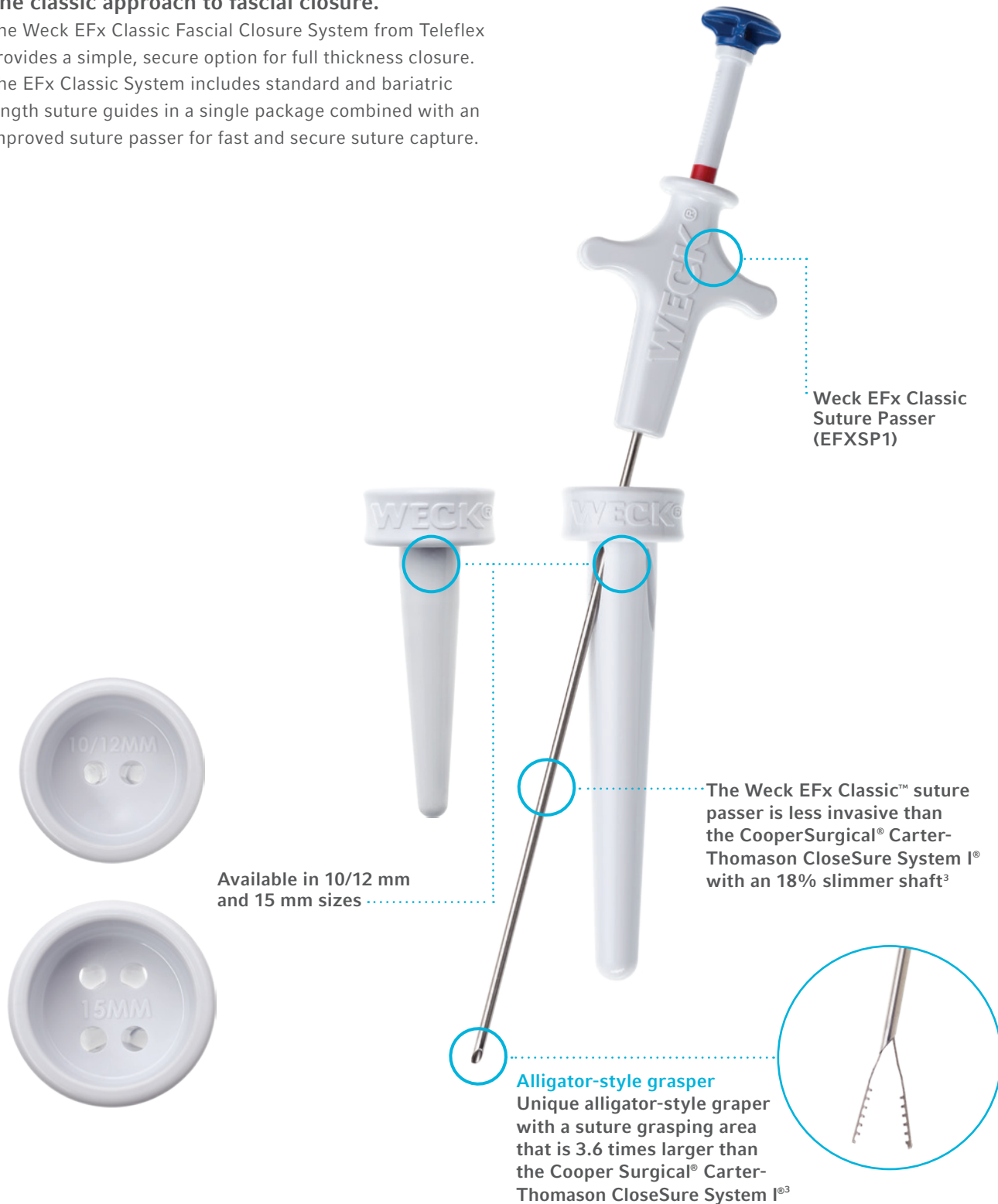
RECIPIENT OF SLS' 2015
INNOVATIONS OF THE YEAR
RECOGNITION



Weck Efx Classic™ Fascial Closure System

The classic approach to fascial closure.

The Weck Efx Classic Fascial Closure System from Teleflex provides a simple, secure option for full thickness closure. The Efx Classic System includes standard and bariatric length suture guides in a single package combined with an improved suture passer for fast and secure suture capture.



Peer Reviewed Data on Fascial Closure

Clinical studies on fascial closure have concluded:

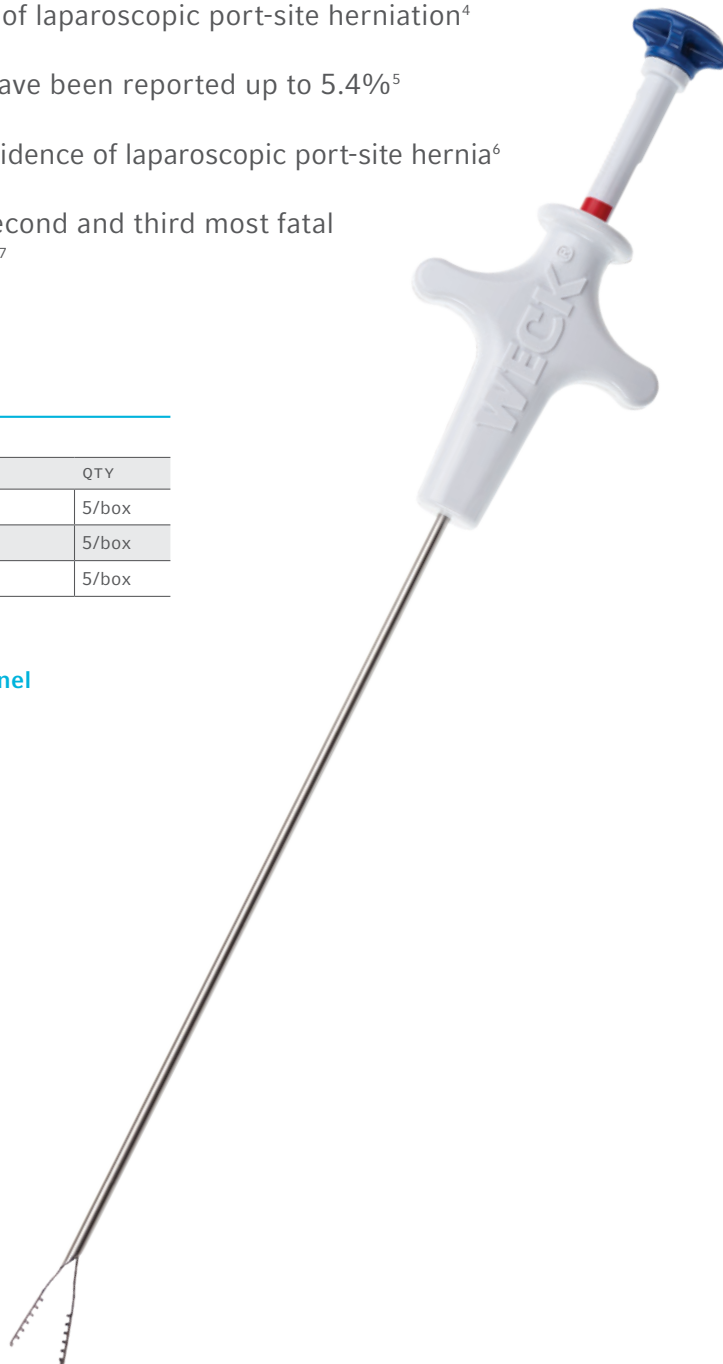
1. Fascial closure can reduce incidence of laparoscopic port-site herniation⁴
2. Laparoscopic port-site hernia rates have been reported up to 5.4%⁵
3. Bariatric surgery has an increased incidence of laparoscopic port-site hernia⁶
4. Visceral and bowel injuries are the second and third most fatal complication of laparoscopic surgery⁷

Ordering Information

ITEM NO.	DESCRIPTION	QTY
EFX002	Weck EFX Shield Fascial Closure System	5/box
EFXCT1	Weck EFX Classic Fascial Closure System	5/box
EFXSP1	Weck EFX Classic Suture Passer	5/box



Subscribe to our YouTube channel
to see product videos and more:
teleflex.link/LATAM/YouTube



3. Teleflex Incorporated. Suture Passer Dimension Study (TRQ-00004091). 2019. Bench test results may not be indicative of clinical performance.
4. E. Mikhail, S. Hart. Laparoscopic port closure. *Surg Technol Int.* 2014; 24:27-33.
5. Swank, H. A., Mulder, I. M., la Chapelle, C. F., Reitsma, J. B., Lange, J. F., & Bemelman, W. A. (2012). Systematic review of trocar-site hernia. *Br J Surg*, 99(3), 315-323. doi:10.1002/bjs.7836
6. Scozzari G, Eta I. High incidence of trocar site hernia after laparoscopic or robotic Roux-en-Y gastric bypass. *Surg Endosc.* 2014; 28(10): 2890-8. doi: 10.1007/s00464-014- 3543-5. Epub 2014 May 2.
7. Ulker K, Et al. Large bowel injuries during gynecological laparoscopy. *World J Clin Cases.* 2014; 2(12): 846-51. doi: 10.12998/wjcc.v2.i12.846

Teleflex is a global provider of medical technologies designed to improve the health and quality of people's lives. We apply purpose driven innovation – a relentless pursuit of identifying unmet clinical needs – to benefit patients and healthcare providers. Our portfolio is diverse, with solutions in the fields of vascular and interventional access, surgical, anesthesia, cardiac care, urology, emergency medicine and respiratory care. Teleflex employees worldwide are united in the understanding that what we do every day makes a difference. For more information, please visit teleflex.com.

Teleflex is the home of Arrow®, Deknatel®, Hudson RCI®, LMA®, Pilling®, Rüsçh®, and Weck® – trusted brands united by a common sense of purpose.

Corporate Office

Phone +1 610 225 6800, 550 E. Swedesford Road, Suite 400, Wayne, PA 19087, USA

Regional Offices

United States: Phone +1 919 544 8000, Toll Free 866 246 6990, cs@teleflex.com, 3015 Carrington Mill Boulevard, Morrisville, NC 27560, USA

Latin America: Phone +1 919 433 4999, la.cs@teleflex.com, 3015 Carrington Mill Boulevard, Morrisville, NC 27560, USA

International: Phone +353 (0)9 06 46 08 00, orders.intl@teleflex.com, Teleflex Medical Europe Ltd., IDA Business and Technology Park, Dublin Road, Athlone, Co Westmeath, Ireland

Australia 1300 360 226

Austria +43 (0)1 402 47 72

Belgium +32 (0)2 333 24 60

Canada +1 (0)800 387 9699

China (Shanghai) +86 (0)21 6163 0965

China (Beijing) +86 (0)10 6418 5699

Czech Republic +420 (0)495 759 111

France +33 (0)5 62 18 79 40

Germany +49 (0)7151 406 0

Greece +30 210 67 77 717

India +91 (0)44 2836 5040

Italy ++39 0362 58911

Japan +81 (0)3 6632 3600

Korea +82 2 536 7550

Mexico +52 55 5002 3500

Netherlands +31 (0)88 00 215 00

New Zealand 0800 601 100

Portugal +351 22 541 90 85

Singapore (SEA non-direct sales countries) +65 6439 3000

Slovak Republic +421 (0)3377 254 28

South Africa +27 (0)11 807 4887

Spain +34 918 300 451

Switzerland +41 (0)31 818 40 90

United Kingdom +44 (0)1494 53 27 61

For more information, please visit teleflex.com.

Federal Law (USA) restricts these devices to sale by or on the order of a physician.

Teleflex, the Teleflex logo, EFX Classic, EFX Shield, Pilling, Weck, and Weck EFX are trademarks or registered trademarks of Teleflex Incorporated or its affiliates, in the U.S. and/or other countries. All other trademarks are property of their respective owners.

Information in this material is not a substitute for the product Instructions for Use. Not all products may be available in all countries. Please contact your local representative.

© 2020 Teleflex Incorporated. All rights reserved.

MC-006288 LA EN