



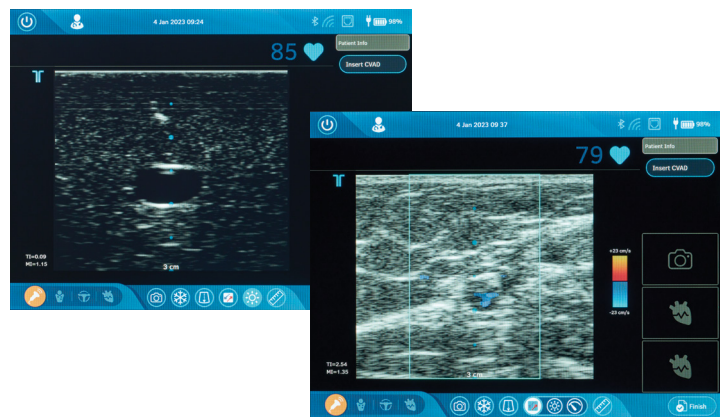
VPS Rhythm™ DLX Device Ultrasound PICC placement for those who **don't like surprises**

Arrow™ VPS Rhythm™ DLX Device Ultrasound Visualisation for targeted placement

Good vessel assessment is essential to ensuring PICC insertion success, as well as patient comfort and safety. To achieve this, you need a clear ultrasound for insertion planning and needle guidance. The VPS Rhythm™ DLX Device with integrated ultrasound is designed to be a clear and easy-to-use vessel assessment tool.

The VPS Rhythm™ DLX Device Ultrasound mode allows the user to¹:

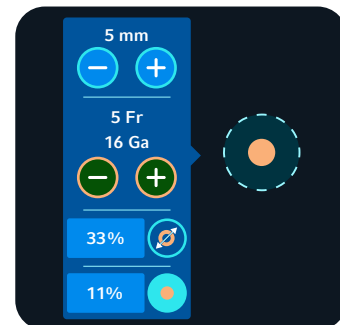
- Freeze or unfreeze image
- Take a snapshot
- Get both diameter and area measurements with the catheter-to-vessel ratio (CVR) tool
- Visualise qualitative indicators of fluid flow and direction with the Colour Flow Mapping Mode
- Use an optional needle guide bracket
- Use freeze and snapshot buttons directly on the probe



Catheter-to-Vessel Ratio Tool²

The CVR tool assists the clinician in choosing the appropriate French sized catheter. The INS guidelines state that a catheter less than 45% diameter ensures patient safety by protecting the vasculature from over-occlusion.³

- Easily position the measurement circle over the vessel and adjust to match the size of the vessel in 0.5 mm increments
- Use blue +/- to input the vessel inner diameter
- Use orange +/- to input the catheter French size
- Ratio is automatically calculated in diameter and area



References:

1. ADHX-001612: Design History File Index for VPS Rhythm™ DLX System.
2. RHY-200-OPM-US: VPS Rhythm™ DLX Operator's Manual.
3. Gorski LA, Hadaway L, Hagle ME, et al. Infusion Therapy Standards of Practice, 8th Edition. J Infus Nurs. 2021;44(1S Suppl 1):S1-S224.

Teleflex, the Teleflex logo, Arrow and VPS Rhythm are trademarks or registered trademarks of Teleflex Incorporated or its affiliates, in the U.S. and/or other countries. Information in this material is not a substitute for the product Instructions for Use. Not all products may be available in all countries. Please contact your local representative. Revised: 06/2024. © 2024 Teleflex Incorporated. All rights reserved. MCI-101792 · REV 0 · 06 24 PDF